

# ENTRON

## NETWORKING & PLC INTERFACES For All Models!

Windows-based software and personal computers running ENLINK with multiple interfaces may be used as master device to communicate with ENTRON Weld Controls to upload, download, store, retrieve, monitor and backup weld schedules.

**DESIGNED, BUILT,  
SUPPORTED  
IN THE USA**

### EN6000 ENLINK

ENLINK 6021 – P/N 730014-001  
ENLINK 6041 – P/N 730015-001

Standard with every control



**USB and ETHERNET INTERFACES**

### PLC Compatibility

- PLC compatible via EtherNet/IP or MODBUS Function Code 04, 16 and 43 through low-cost serial (RS232 and RS485) or ethernet interfaces
- Use weld control I/O for remote PLC I/O
- Map weld control functions for PLC control
- Design custom operator interfaces
- Read and write schedule and control data
- Read after weld for previous weld data
- Interface to other force systems
- Read weld logs remotely

### I/O

- **EN6021 Controls** – 24 VDC I/O (16 in/16 out) on CPU and 24 VDC I/O (16 in/16 out) and 4 AC out on optional I/O Expansion Card; for use as remote I/O for PLC
- **EN6041 Controls** – 24 VDC I/O (32 in/24 out) on CPU; for use as remote I/O for PLC

### USB Flash Memory



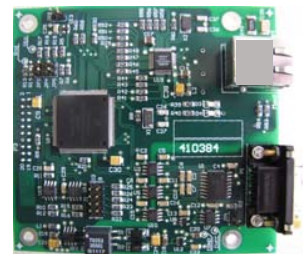
P/N 730014-003

For storage and backup of schedule data and weld log

**Communication Cards**  
With RS232, RS485 and Ethernet – Provides ability to network multiple controls using ENLINK

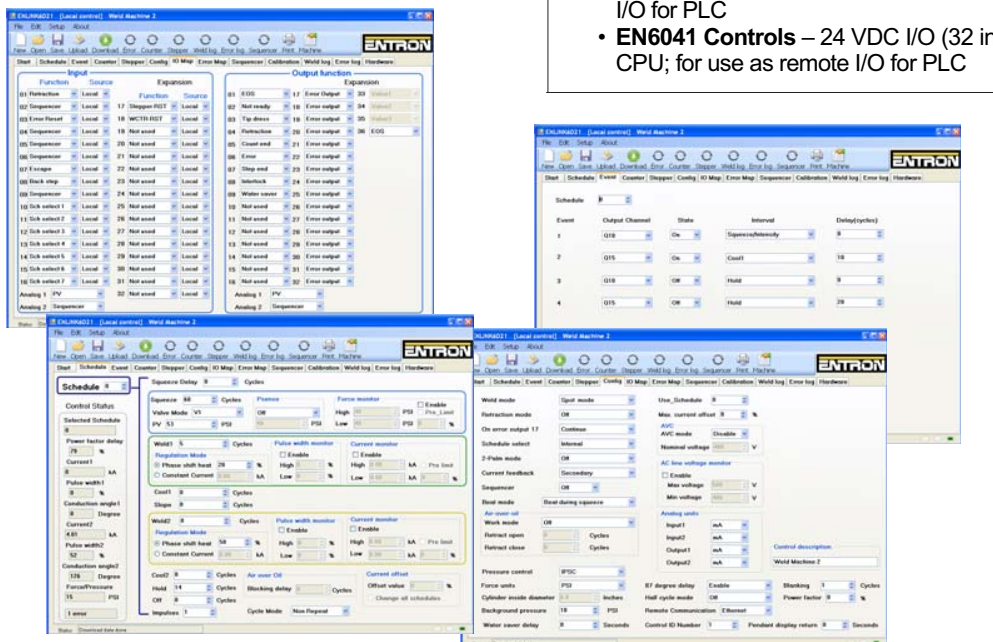
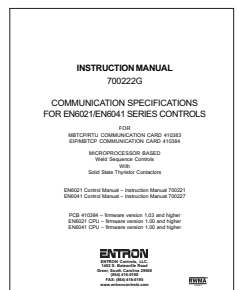
#### Two Options:

MBTCP/RTU Card – Modbus TCP or Modbus RTU (P/N 730014-007)  
EIP/MBTCP Card – EtherNet/IP and Modbus TCP (P/N 730014-013)



### Communications Manual

P/N 700222  
Complete documentation for installing and implementing Interface Options



**EN6021 and EN6041 are part of the EN6000 Series family**

# EN1701 ENLINK

ENLINK 1701 – P/N 730005-004



## RS232 and ETHERNET INTERFACES

### PLC Compatibility

- PLC compatible via EtherNet/IP or MODBUS Function Codes 01, 02, 03, 04, 05, 15, 16 and 43 through ethernet interfaces
- Use weld control I/O for remote PLC I/O
- Map weld control functions for PLC control
- Design custom operator interfaces
- Read and write schedule and control data
- Read after weld for previous weld data
- Interface to other force systems

### I/O

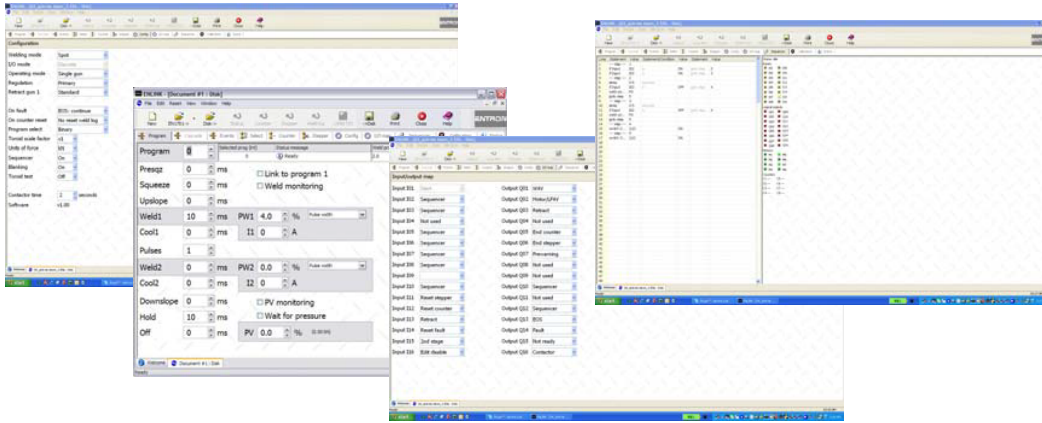
24 VDC flexible I/O (16 in/16 out); some mappable between weld functions, events, simple I/O sequences and remote PLC I/O

### Ethernet Communication Cards

Provides ability to network multiple controls using ENLINK

#### Two Options:

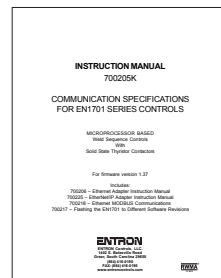
- Ethernet/Modbus Card (P/N 730005-003)
- EtherNet/IP Card (P/N 730005-014)



### Communications Manual

P/N 700205

Complete documentation for installing and implementing Interface Options



# EN1000 ENLINK

ENLINK 1000/1001 – P/N 600689

Includes ENLINK for EN1000/1001 Controls and ENLINK for EN1000/1001 Cascade Controls



## RS485 and RS232 INTERFACES

### Communication Cards



### RS485 & RS232 Options

Available to retrofit EN1000 Series Weld Controls allowing use of existing weld controls on ENBUS

### S485 – RS232 to RS485 Option

P/N 600692

### U485 – USB to RS485 Option

P/N 600691

Interfaces from RS232 or USB to RS485 provide simple interface to USER provided PCs or PLCs



### Plugs and Cable

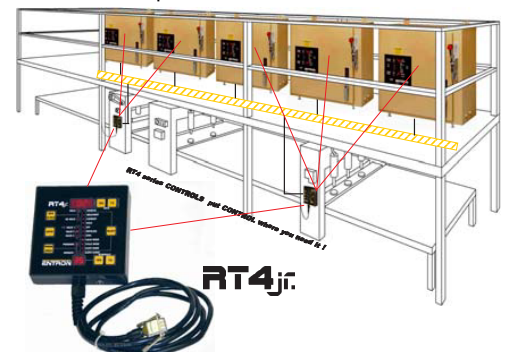
and components to complete the ENBUS network are available



### Remote Terminal RS485

P/N 730005-004

Communicate with weld control groups to program weld control parameters at convenient locations

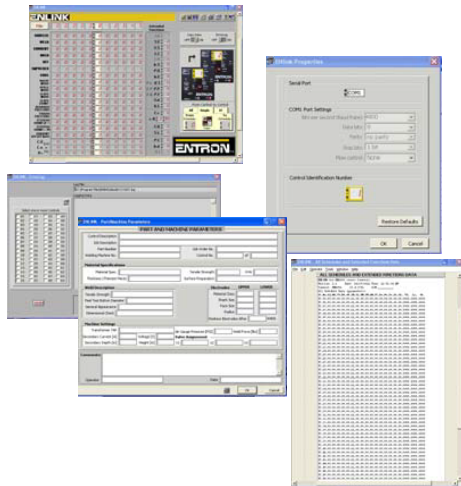
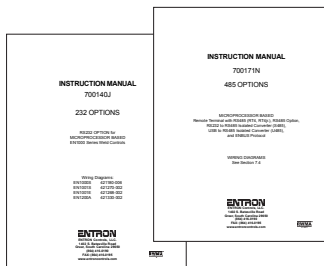


### Instruction Manuals

232 Options – P/N 700140

485 Options – P/N 700171

Complete documentation for installing and implementing Interface Options



Distributed by:

**PRODUCTION ENGINEERING**

1344 Woodman Drive  
Dayton, Ohio 45432

888-654-WELD (9353)

sales@productionengineering.com

www.resistanceweldsupplies.com