

BF
ENTRON

iPAK

Medium-frequency resistance welding power source, with integrated control, monitor and machine sequencer .

iPAK is an integrated timer/controller/inverter system for MF resistance welding. The control section is housed in a cassette type casing, which simply mounts onto the power pack for ease of maintenance.

Millisecond precision, constant current and constant power operation, with comprehensive monitoring, assures weld quality.

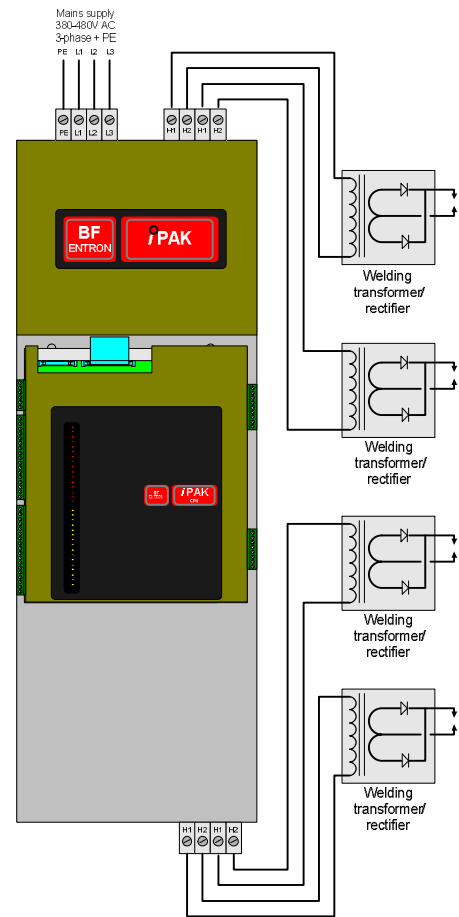
Output current from 360A to 6000A.
Standard supply voltage 380-480V AC. 3-Ph.
iPAK-HV for supply voltage up to 580V AC. 3-Ph.
iPAK-LV for supply voltage 190-290V AC. 3-Ph.

A powerful built-in logic sequencer program provides the iPAK with a flexible means of fully controlling small machines or tooling arrangements, without the need for additional hardware.

A plug-in option board provides a 10/100Base-T Ethernet connection. Units may then be networked to a PC running WS98-iPAK software for programming and monitoring purposes.

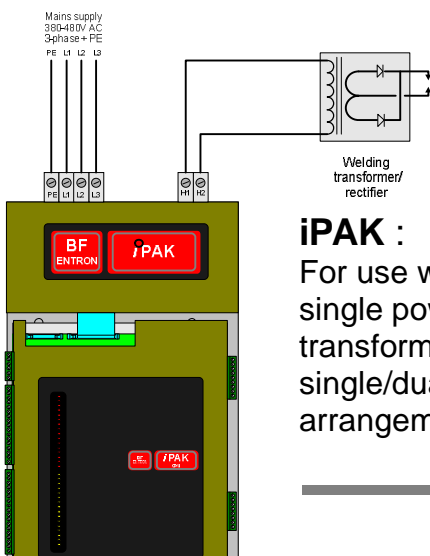
Fieldbus operation is supported via plug-in option boards.

With Ethernet, DeviceNet, Profibus and InterBus connectivity, iPAK integrates easily into any automation environment.



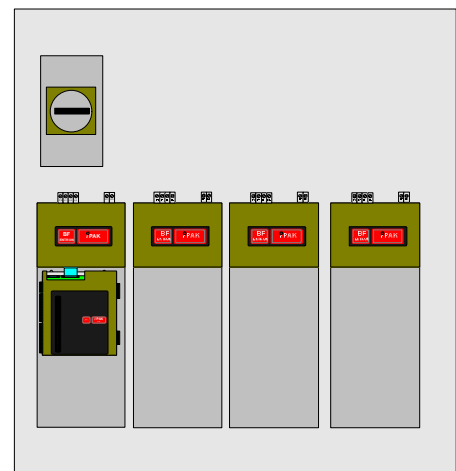
iPAK-MPX :

For use with up to four power transformers for multi-weld arrangements.



iPAK :

For use with a single power transformer in a single/dual gun arrangement.



iPAK-LMI :

(Large Modular Inverter)

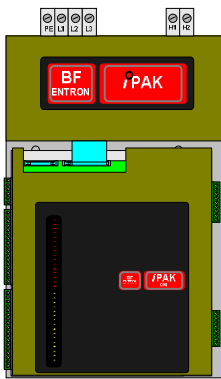
Multiple power modules are used to produce outputs of up to 6000A.

BF
ENTRON

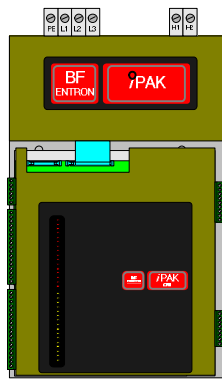
iPAK

iPAK welding power source with integrated timer, in 360A / 600A / 1000A/ 1500A sizes. These units are available as modules, or complete with MCCB etc. in cabinets.

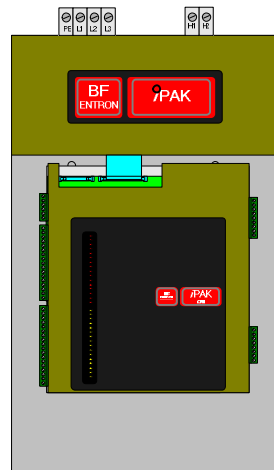
Model	Max. Output	Max. voltage	No. of outputs	Cooling	Max. welding current (@ 50:1)	size
iPAK 360AA	360 A	480	1	Air	18 kA	1A
iPAK 360AW	360 A	480	1	Water	18 kA	1W
iPAK-HV 360AW	360 A	580	1	Water	18 kA	2W
iPAK-LV 360AA	360 A	290	1	Air	18 kA	1A
iPAK-LV 360AW	360 A	290	1	Water	18 kA	1W
iPAK 600AA	600 A	480	1	Air	30 kA	1A
iPAK 600AW	600 A	480	1	Water	30 kA	1W
iPAK-HV 600AW	600 A	580	1	Water	30 kA	2W
iPAK-LV 600AA	600 A	290	1	Air	30 kA	1A
iPAK-LV 600AW	600 A	290	1	Water	30 kA	1W
iPAK 1000AW	1000 A	480	1	Water	50 kA	2W
iPAK-LV 1000AW	1000 A	290	1	Water	50 kA	2W
iPAK-MPX4 600AW	600A	480	4	Water	30 kA	3W
iPAK-MPX4 900AW	900A	480	4	Water	45 kA	3W
iPAK 1500AW	1500 A	480	1	Water	75 kA	3W



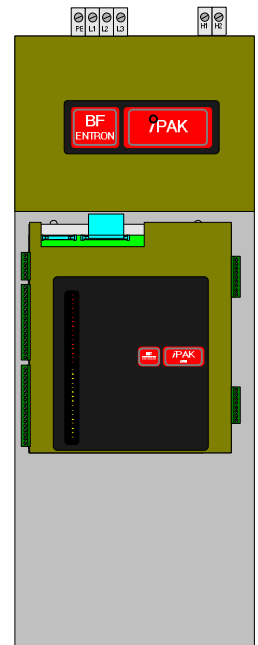
Size 1A
460h x 260w x 260d mm
(plus 100d for fan pack)



Size 1W
460h x 260w x 260d mm
(plus 20d for water cooler)



Size 2W
540h x 330w x 310d mm
(inc. water cooler)



Size 3W
890h x 300w x 265d mm
(inc. water cooler)

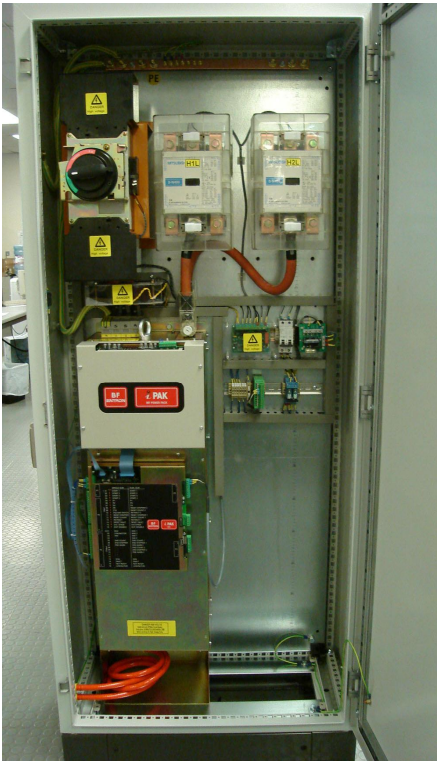


Typical complete iPAK control system with circuit-breaker in industrial enclosure.

BF
ENTRON

iPAK

The iPAK-LMI range uses multiple iPAK 1500A to provide outputs of 1500A, 3000A, 4500A and 6000A. Only one iPAK timer is required in each system. These systems come complete with MCCB etc. in floor standing cabinets.

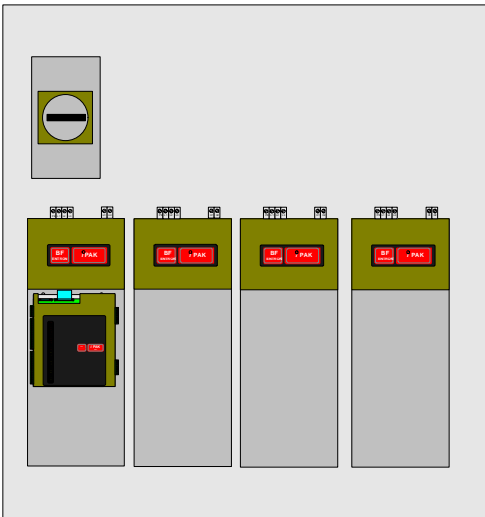
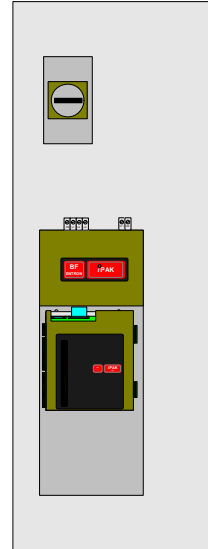


iPAK-LMI/1500AW
with optional
isolation contactor.

1500 Amp

Use for typical welding currents
of up to 75kA (@ 50:1)

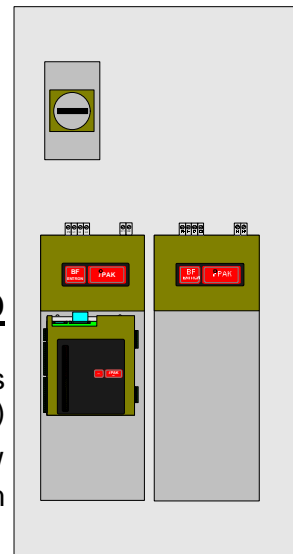
iPAK LMI/1500AW
1900h x 600w x 400d mm



3000 Amp

Use for typical welding currents
of up to 150kA (@50:1)

iPAK LMI/3000AW
1900h x 800w x 400d mm



6000 Amp

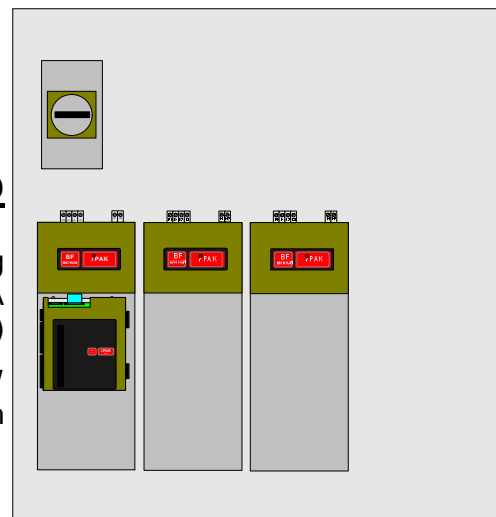
Use for typical welding
currents of up to 300kA
(@50:1)

iPAK LMI/6000AW
1900h x 1600w x 400d mm

4500 Amp

Use for typical welding
currents of up to 225kA
(@ 50:1)

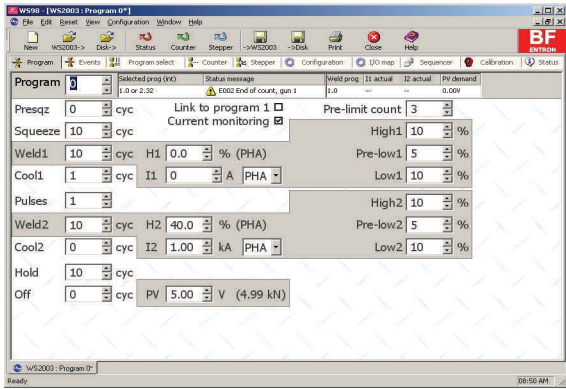
iPAK LMI/4500AW
1900h x 1600w x 400d mm





Medium-frequency resistance welding power source, with integrated control, monitor and machine sequencer.

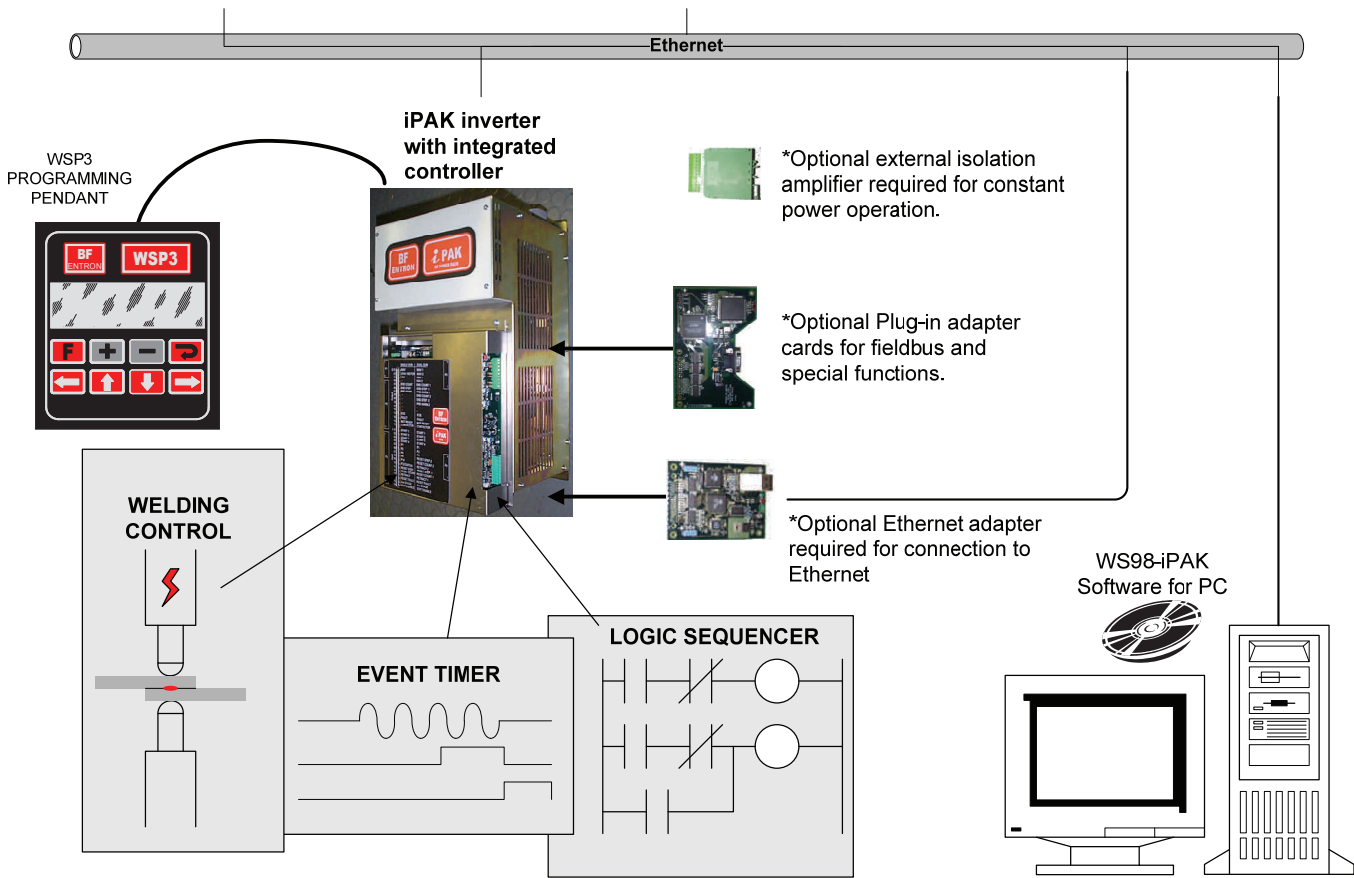
WS98-iPAK: Windows based software for programming, monitoring, diagnostics, data back-up etc. Can be used on a PC either locally (RS232/USB) or remotely via an Ethernet network.



WSP3: Programming pendant for programming, monitoring, diagnostics, data back-up etc. For direct connection to the iPAK RS232 port.



iPAK SYSTEM



Distributed by:
PRODUCTION ENGINEERING
 1344 Woodman Drive
 Dayton, Ohio 45432

888-654-WELD (9353)
 sales@productionengineering.com

www.resistanceweldsupplies.com