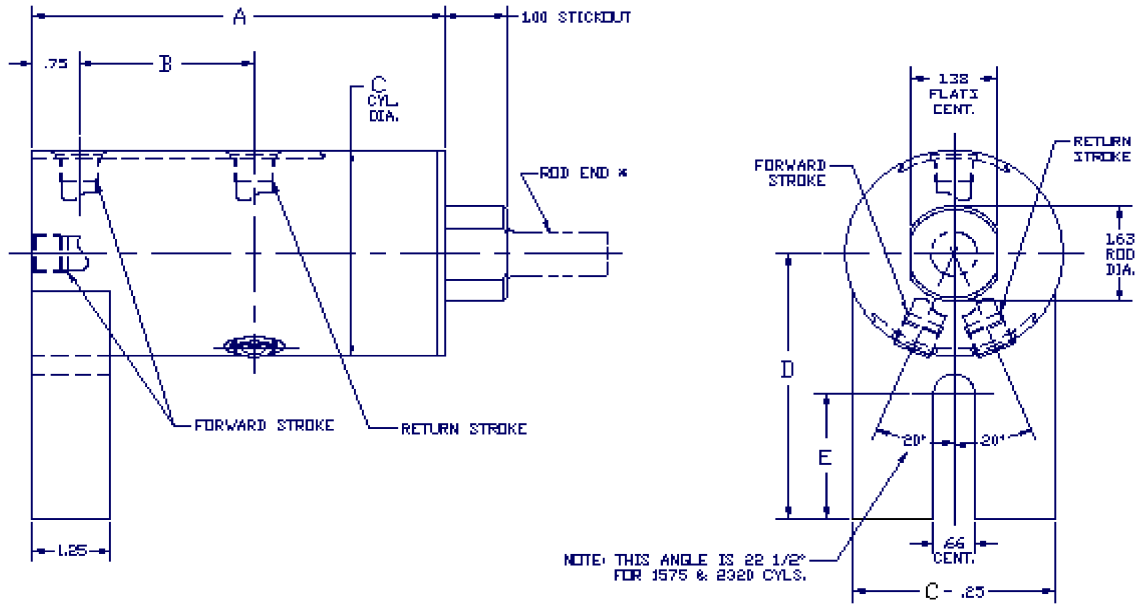


C MOUNT CYLINDERS (3.25" - 4.00" BORE) (MEDIUM DUTY)



DUAL PISTON CYLINDERS							PISTON AREA	
MODEL NO.	STROKE	A	B	C	D	E	EXT.	RET.
AC-C-G-1575-4*	1.00	6.62	2.81	3.50	4.50	2.12	15.81	7.51
AC-C-G-1575-6*	1.50	7.62	3.31					
AC-C-G-1575-8*	2.00	8.62	3.81					
AC-C-G-1575-12*	3.00	10.62	4.81					
AC-C-G-1575-16*	4.00	12.62	5.81					
AC-C-G-1575-20*	5.00	14.62	6.81					
AC-C-G-1575-24*	6.00	16.62	7.81					
AC-C-G-1840-4*	1.00	6.62	2.81	3.75	4.50	2.12	18.46	8.84
AC-C-G-1840-6*	1.50	7.62	3.31					
AC-C-G-1840-8*	2.00	8.62	3.81					
AC-C-G-1840-12*	3.00	10.62	4.81					
AC-C-G-1840-16*	4.00	12.62	5.81					
AC-C-G-1840-20*	5.00	14.62	6.81					
AC-C-G-1840-24*	6.00	16.62	7.81					
AC-C-G-2125-4*	1.00	6.62	2.81	4.00	5.00	2.25	21.30	10.26
AC-C-G-2125-6*	1.50	7.62	3.31					
AC-C-G-2125-8*	2.00	8.62	3.81					
AC-C-G-2125-12*	3.00	10.62	4.81					
AC-C-G-2125-16*	4.00	12.62	5.81					
AC-C-G-2125-20*	5.00	14.62	6.81					
AC-C-G-2125-24*	6.00	16.62	7.81					
AC-C-G-2430-4*	1.00	6.62	2.81	4.25	5.00	2.25	24.35	11.78
AC-C-G-2430-6*	1.50	7.62	3.31					
AC-C-G-2430-8*	2.00	8.62	3.81					
AC-C-G-2430-12*	3.00	10.62	4.81					
AC-C-G-2430-16*	4.00	12.62	5.81					
AC-C-G-2430-20*	5.00	14.62	6.81					
AC-C-G-2430-24*	6.00	16.62	7.81					

TRIPLE PISTON CYLINDERS							PISTON AREA	
MODEL NO.	STROKE	A	B	C	D	E	EXT.	RET.
AC-C-E3-2320-4*	1.00	9.12	2.81	3.50	4.50	2.12	22.99	7.51
AC-C-E3-2320-6*	1.50	10.62	3.31					
AC-C-E3-2320-8*	2.00	12.12	3.81					
AC-C-E3-2320-12*	3.00	15.12	4.81					
AC-C-E3-2320-16*	4.00	18.12	5.81					
AC-C-E3-2320-20*	5.00	21.12	6.81					
AC-C-E3-2320-24*	6.00	24.12	7.81					
AC-C-E3-2710-4*	1.00	9.12	2.81	3.75	4.50	2.12	26.97	8.84
AC-C-E3-2710-6*	1.50	10.62	3.31					
AC-C-E3-2710-8*	2.00	12.12	3.81					
AC-C-E3-2710-12*	3.00	15.12	4.81					
AC-C-E3-2710-16*	4.00	18.12	5.81					
AC-C-E3-2710-20*	5.00	21.12	6.81					
AC-C-E3-2710-24*	6.00	24.12	7.81					
AC-C-E3-3140-4*	1.00	9.12	2.81	4.00	5.00	2.25	31.24	10.26
AC-C-E3-3140-6*	1.50	10.62	3.31					
AC-C-E3-3140-8*	2.00	12.12	3.81					
AC-C-E3-3140-12*	3.00	15.12	4.81					
AC-C-E3-3140-16*	4.00	18.12	5.81					
AC-C-E3-3140-20*	5.00	21.12	6.81					
AC-C-E3-3140-24*	6.00	24.12	7.81					
AC-C-E3-3600-4*	1.00	9.12	2.81	4.25	5.00	2.25	35.81	11.78
AC-C-E3-3600-6*	1.50	10.62	3.31					
AC-C-E3-3600-8*	2.00	12.12	3.81					
AC-C-E3-3600-12*	3.00	15.12	4.81					
AC-C-E3-3600-16*	4.00	18.12	5.81					
AC-C-E3-3600-20*	5.00	21.12	6.81					
AC-C-E3-3600-24*	6.00	24.12	7.81					

* ADD ROD END STYLE (SEE PAGE 1 FOR OPTIONS)
 ADDITIONAL STROKE LENGTHS ARE AVAILABLE IN .50" INCREMENTS
 ALL PORTS 3/8-18 STANDARD PIPE TAP

Phone: (888) 654-9353

www.resistanceweldsupplies.com