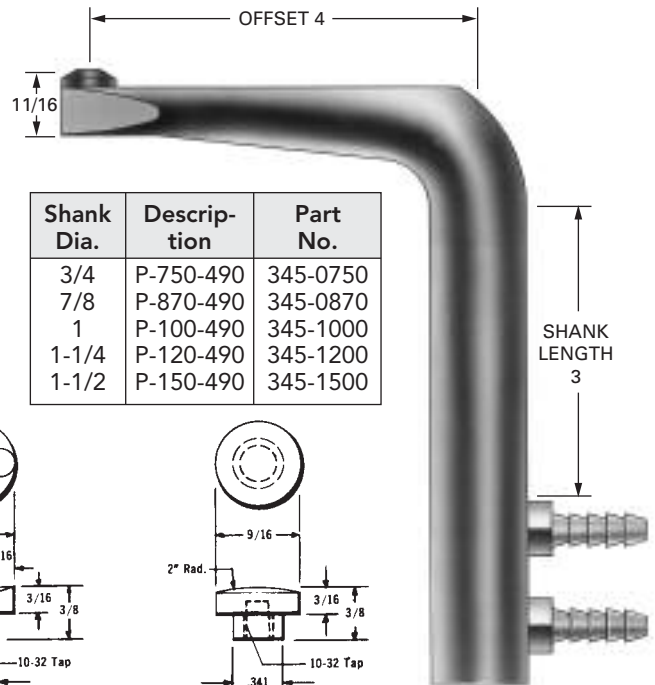


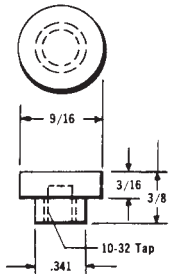
### TUFFALOY PADDLE-TYPE HOLDERS AND SOCKET-TYPE TIPS

This holder is for welding in very restricted areas. It provides a very low head height and a four-inch offset. It is made in shank diameters of 3/4, 7/8, 1, and 1-1/4 inches. An adapter bushing is used to add a 1-1/2-in. dia. model to the line. Each holder comes complete with a socket-type tip (SE-3101) and holding screw. The tip may be inserted in either side of the paddle. Holders are of Class 2 alloy. Tips are available in Class 1, Class 2, Class 3 alloy, or Z alloy.

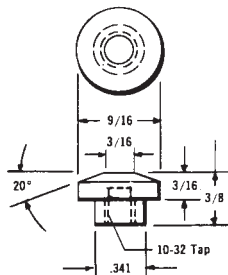
The four socket-type tips shown here can be used in special welding fixtures and dies as well as in the paddle-type holders.



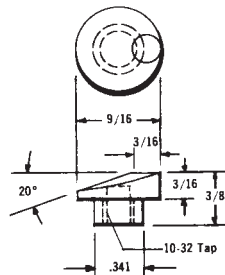
Shank Dia.	Description	Part No.
3/4	P-750-490	345-0750
7/8	P-870-490	345-0870
1	P-100-490	345-1000
1-1/4	P-120-490	345-1200
1-1/2	P-150-490	345-1500



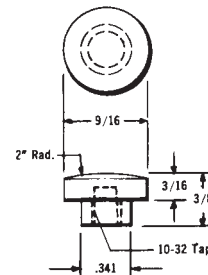
**FLAT FACED**  
Class 1 SE-3099-1  
Part No. 170-3099-1  
Class 2 SE-3099  
Part No. 170-3099  
Class 3 SE-3111  
Part No. 170-3111  
ZIRC SE-3099-Z  
Part No. 170-3099-Z



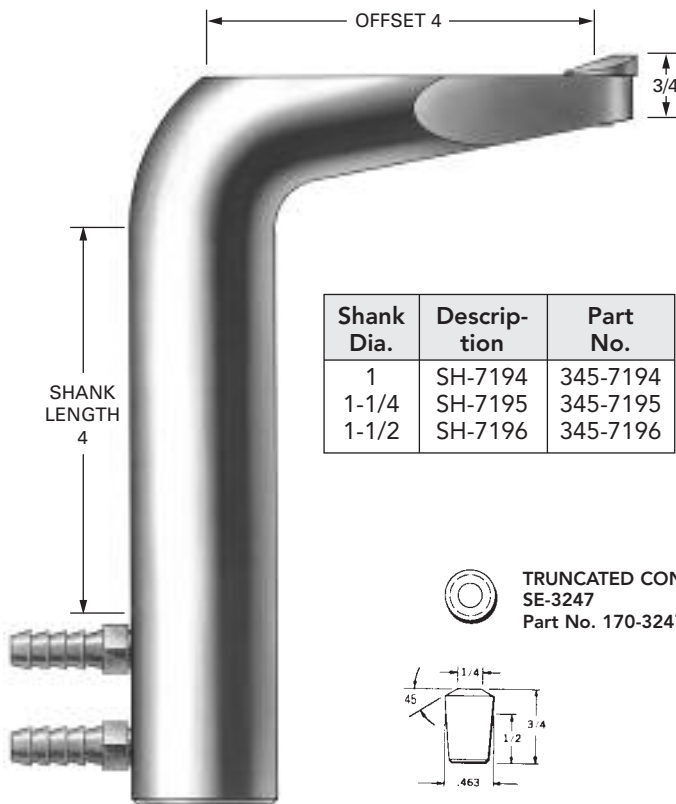
**TRUNCATED CONE**  
Class 1 SE-3101-1  
Part No. 170-3101-1  
Class 2 SE-3101  
Part No. 170-3101  
Class 3 SE-3113  
Part No. 170-3113  
ZIRC SE-3101-Z  
Part No. 170-3101-Z



**OFFSET**  
Class 1 SE-3102-1  
Part No. 170-3102-1  
Class 2 SE-3102  
Part No. 170-3102  
Class 3 SE-3123  
Part No. 170-3123  
ZIRC SE-3102-Z  
Part No. 170-3102-Z



**RADIUS FACED**  
Class 1 SE-3110-1  
Part No. 170-3110-1  
Class 2 SE-3110  
Part No. 170-3110  
Class 3 SE-3133  
Part No. 170-3133  
ZIRC SE-3110-Z  
Part No. 170-3110-Z



### TUFFALOY HEAVY-DUTY PADDLE-TYPE HOLDERS AND TIPS

TUFFALOY heavy-duty paddle-type holders are made of the stronger Class 3 alloy, for greater rigidity and minimum deflection, even under loads of 1000 pounds and more. Class 3 alloy provides 154% more tensile strength. Head height is a low 3/4-in. and the shank length is a usable 4 inches.

Three low-profile electrodes of Class 2 alloy are offered for use in this heavy-duty holder. If applications permit greater head height, any standard No. 4 RW tip may be used.

Shank Dia.	Description	Part No.
1	SH-7194	345-7194
1-1/4	SH-7195	345-7195
1-1/2	SH-7196	345-7196

