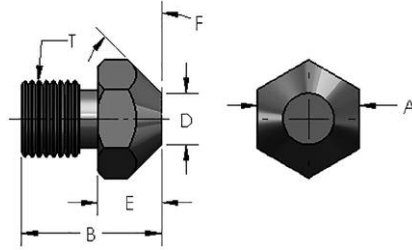
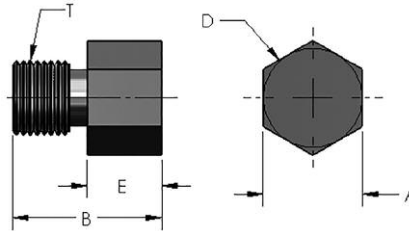


# TUFFALOY THREADED TIPS



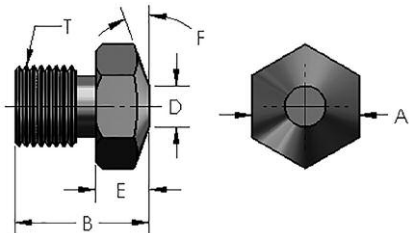
## “A” POINTED NOSE THREADED ELECTRODE

RWMA Alloy Class No.	Part Number	Part Description	T Thread Size	A Hex Size (in)	B Overall Length	D Weld Face Diameter	E Hex Body Length (in)	F Angle
2 (CuCr)	188-2431-16-A	TH-2431-16-A	3/8-16	1/2	11/16	1/4	5/16	45°
2 (CuCrZr)	188-2431-16-AZ	TH-2431-16-AZ	3/8-16	1/2	11/16	1/4	5/16	45°
2 (CuCrZr)	188-2437-16-AZ	TH-2437-16-AZ	3/8-16	1/2	3/4	1/4	3/8	45°
2 (CuCrZr)	188-2450-16-AZ	TH-2450-16-AZ	3/8-16	1/2	7/8	1/4	1/2	45°
3	188-3450-16-A	TH-3450-16-A	3/8-16	1/2	7/8	1/4	1/2	45°



## “C” FLAT NOSE THREADED ELECTRODE

RWMA Alloy Class No.	Part Number	Part Description	T Thread Size	A Hex Size (in)	B Overall Length	D Weld Face Diameter	E Hex Body Length (in)
3	188-3437-16-C	TH-3437-16-C	3/8-16	1/2	3/4	1/2	3/8
2 (CuCr)	188-2450-16-C	TH-2450-16-C	3/8-16	1/2	7/8	1/2	1/2
3	188-3450-16-C	TH-3450-16-C	3/8-16	1/2	7/8	1/2	1/2
2 (CuCr)	187-5062-14	5062-14-C	7/16-14	5/8	3/4	5/8	3/8
2 (CuCr)	187-5062-16	5062-16-C	3/8-16	5/8	3/4	5/8	3/8
2 (CuCr)	187-5100-10	5100-10-C	3/4-10	1	2	1	1-3/8
2 (CuCr)	187-5125-10	5125-10-C	3/4-10	1-1/4	2	1-1/4	1-3/8
2 (CuCr)	187-5100-11	5100-11-C	5/8-11	1	2	1	1-3/8
2 (CuCr)	187-5100-18	5100-18-C	5/8-18	1	2	1	1-3/8



## “E” TRUNCATED NOSE THREADED ELECTRODE

RWMA Alloy Class No.	Part Number	Part Description	T Thread Size	A Hex Size (in)	B Overall Length	D Weld Face Diameter	E Hex Body Length (in)	F Angle
2 (CuCr)	188-2425-16-E	TH-2425-16-E	3/8-16	1/2	5/8	3/16	1/4	20°
3	188-3425-16-E	TH-3425-16-E	3/8-16	1/2	5/8	3/16	1/4	20°
3	188-3437-16-E	TH-3437-16-E	3/8-16	1/2	3/4	3/16	3/8	20°
2 (CuCr)	188-2450-16-E	TH-2450-16-E	3/8-16	1/2	7/8	3/16	1/2	20°
3	188-3450-16-E	TH-3450-16-E	3/8-16	1/2	7/8	3/16	1/2	20°
2 (CuCr)	188-5062-14	5062-14-E	7/16-14	5/8	3/4	1/4	3/8	45°
2 (CuCr)	188-5100-11	5100-11-E	5/8-11	1	2	1/2	1-3/8	20°
2 (CuCr)	188-5100-18	5100-18-E	5/8-18	1	2	1/2	1-3/8	20°
2 (CuCr)	188-5100-10	5100-10-E	3/4-10	1	2	1/2	1-3/8	20°
2 (CuCr)	188-5125-10	5125-10-E	3/4-10	1	2	1/2	1-3/8	20°

