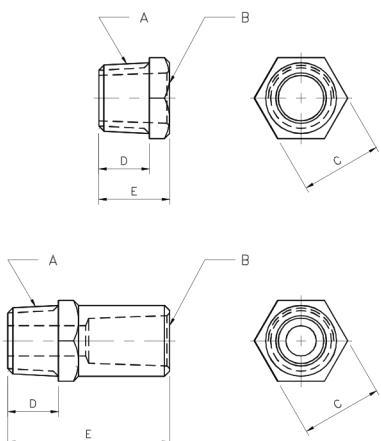
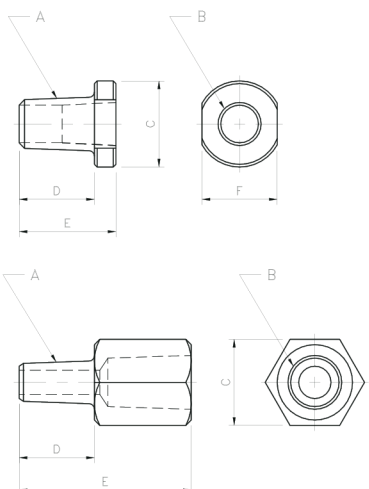


## TIP ADAPTERS

### TIP ADAPTERS



EXAMPLE OF PART CODING:		
AT	=	TAPER
H	=	HEX STOCK
R	=	ROUND STOCK
2	=	CLASS 2 COPPER
4	=	# 4 RW FEMALE TAPER
5	=	# 5 RW MALE TAPER
8	=	LENGTH IN 1/8" INCREMENTS

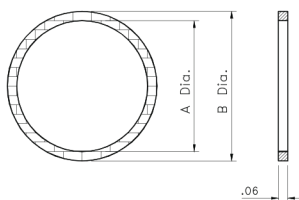
FEMALE TAPER TO MALE TAPER						
#130 Code No.	Male Taper	Female Taper	Stock Size	Length Under Head	Overall Length	Wrench Flats
	A	B	C	D	E	F
AT-R245-9	5 RW	4 RW	1	7/8	1-1/8	7/8
AT-R247-12	7 RW	5 RW	1-1/8	1-1/4	1-1/2	1
AT-R257-12						

#130 Code No.	Male Taper	Female Taper	Stock Size	Length Under Head	Overall Length
	A	B	C	D	E
AT-H254-15	4 RW	5 RW	1	7/8	1-7/8

FEMALE TAPER TO MALE STRAIGHT THREAD					
#130 Code No.	Male Thread	Female Taper	Stock Size	Length Under	Overall Length Head
	A	B	C	D	E
AS-H245-7	5/8-18	4 RW	1	5/8	7/8
AS-H255-13		5 RW			1-5/8
AS-H247-7	7/8-14	4 RW			7/8
AS-H257-7		5 RW			
AS-H248-7	1-14	4 RW	1-1/4		
AS-H258-7		5 RW			

\* Sealing Ring included on Straight Threaded Adapters

### COPPER SEALING RINGS



Part Number	A Dia.	B Dia.
760-0-0001	7/8 Dia.	1 Dia.
780-0-0001	1 Dia.	1-1/8 Dia.

EXAMPLE OF PART CODING:		
AS	=	STRAIGHT THREAD
H	=	HEX STOCK
R	=	ROUND STOCK
2	=	CLASS 2 COPPER
4	=	#4 RW FEMALE TAPER
7	=	EXTERNAL THREAD SIZE
8	=	LENGTH IN 1/8" INCREMENTS

**ADDITIONAL LENGTHS, METRIC THREADS AND SPECIAL ADAPTERS AVAILABLE**

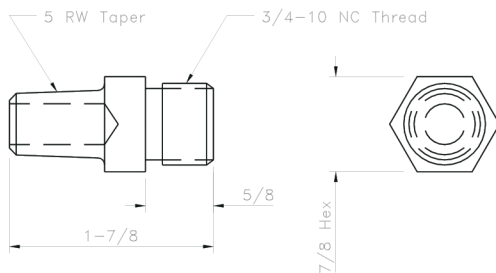
## TIP ADAPTERS

FEMALE TAPER TO MALE PIPE THREAD					
#130 Code No.	Male Pipe Thread	Female Taper	Stock Size	Length Under Head	Overall Length
	A	B	C	D	E
AP-H24A-8 *	3/8			3/4	1
AP-H24B-7 *					7/8
AP-H24B-8					1
AP-H24B-10	1/2	4 RW	1	5/8	1-1/4
AP-H24B-12					1-1/2
AP-H24B-16					2
AP-H24B-20					2-1/2
AP-H24B-24					3
AP-H24C-7 *	5/8				7/8
AP-H24C-8					1
AP-H25A-13	3/8			3/4	1-5/8
AP-H25B-7 *					7/8
AP-H25B-8					1
AP-H25B-10	1/2	5 RW	1	5/8	1-1/4
AP-H25B-12					1-1/2
AP-H25B-16					2
AP-H25B-20					2-1/2
AP-H25B-24					3
AP-H25C-7 *	5/8				7/8
AP-H25C-8					1

#130 Code No.	Male Pipe Thread	Female Taper	Stock Size	Length Under Head	Overall Length
	A	B	C	D	E
AP-H35D-11*					1-3/8
AP-H35D-12					1-1/2
AP-H35D-16		5 RW			2
AP-H35D-20					2-1/2
AP-H35D-24	3/4		1-1/4	7/8	3
AP-H36D-11*					1-3/8
AP-H36D-12					1-1/2
AP-H36D-16		6 RW			2
AP-H36D-20					2-1/2
AP-H36D-24					3

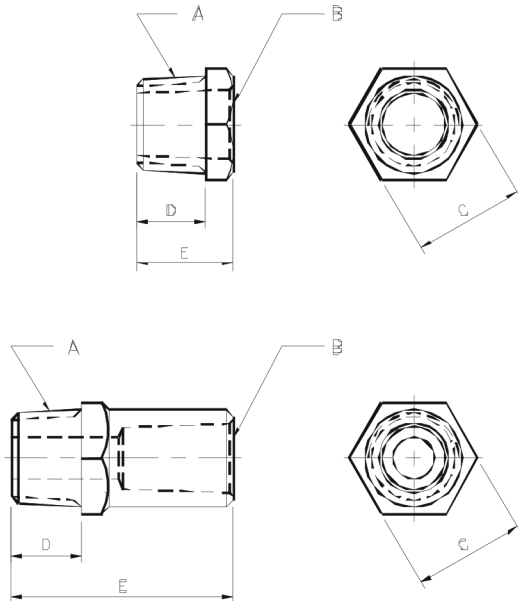
\* Denotes Minimum Length Available

### TAPER ADAPTER



**810408-A**

EXAMPLE OF PART CODING:		
AP	=	PIPE THREAD
H	=	HEX STOCK
R	=	ROUND STOCK
2	=	CLASS 2 COPPER
4	=	#4 RW TAPER
A	=	3/8" MALE PIPE THREAD
B	=	1/2" MALE PIPE THREAD
C	=	5/8" MALE PIPE THREAD
D	=	3/4" MALE PIPE THREAD
8	=	LENGTH IN 1/8" INCREMENTS



**TIP ADAPTERS**