

ENTRON™

Controls for Resistance Welding

iPAK MFDC MPX Cascade Inverter Controls

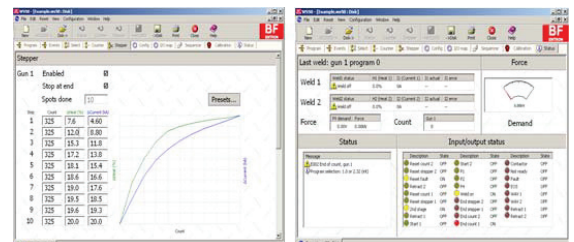
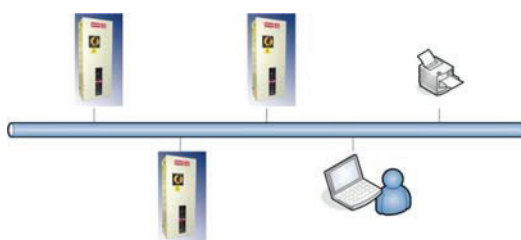
Modular Architecture to fire multiple MFDC Power Supplies



Control fitted into a sheet steel enclosure with circuit breaker, 24 VDC air valve power supply, appropriate line fusing, safety covers, and water-cooled MFDC Inverter Module. Optional hand-held pendant.

WS98-iPAK PC Programming/ Monitoring Software

Network cards, Ethernet I/O cards



Features

- Configuration for 2, 3 or 4 MFDC transformers
- Independent calibration files for each transformer
- Can build cascade programs to be executed in any order
- Spot / Repeat / Roll-spot / Seam (dual heat) / Seam (preheat)
- Pulsation, Upslope and Downslope
- Dual weld intervals per program (Preheat and Weld)
- 64 programs (internal or external selection)
- Constant Current regulation
- Current/Power Monitoring: High/Low limits and Pre-limit
- Proportional valve controller (0–10 V or 4–20 mA)
- Pressure Monitoring: High/Low limits
- Programmable blocking on fault
- Weld Log keeps history of recent welds
- Programmable outputs (events)
- Retract/High-lift control
- Single or dual gun operation
- Optional Constant Voltage regulation / Constant Power
- OHMA (Air over Oil) gun operation
- Up to 3 analog inputs (2 x 0–10 V, plus 1 x 0–10 V or 4–20 mA)
- Machine Sequencer Logic

Exclusive ENTRON one year warranty