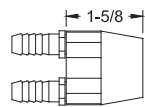
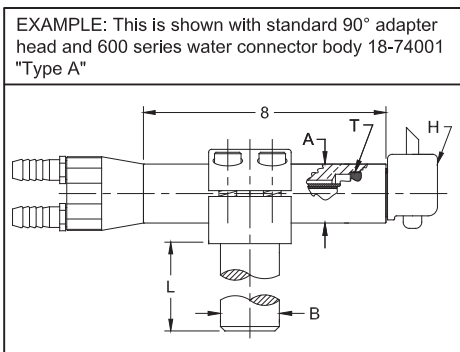
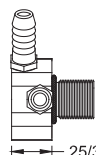


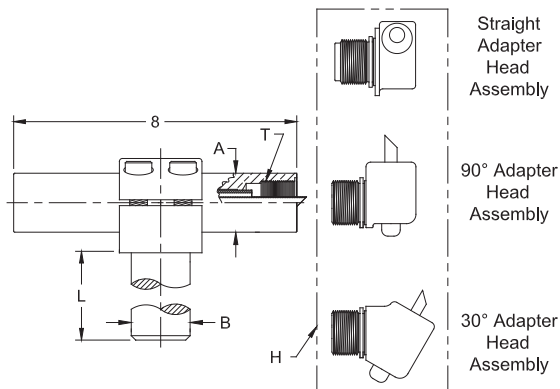
600 SERIES UNIVERSAL WATER COOLED ELECTRODE HOLDERS



TYPE (A)
600 Series Water Connector Body 18-74001



TYPE (C)
100 Series Water Connector Body 18-10042



*Standard holders include type "A" water connector, types "B" and "C" available on request
See page 46 for adapter head details and page 47 for additional "T" connector information.

600 SERIES UNIVERSAL HOLDER (90° ADAPTER HEAD)							
Part No. Holder Assy.*	Taper	Barrel Dia. A	Shank Dia B	Shank Length L	Head Assy. H	Barrel Thread Size T	
18-601 18-603	5 RW	1	7/8	3	18-764	7/8-14	
18-605 18-607		1-1/4	1-1/4	3-1/2	18-764	7/8-14	
18-611 18-613	5 RW	1	7/8	3	18-766	7/8-14	
18-615 18-617		1-1/4	1-1/4	3-1/2	18-766	7/8-14	
18-651 18-657		1-1/4	1-1/4	3-1/2	18-780	1-14	
18-655 18-653		1-1/2	1-1/4	4	18-780	1-14	
18-661 18-665 18-663		7 RW	1-1/4	1-1/4	3-1/2	18-782	1-14
			1-1/2	1-1/4	4		

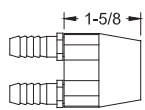


600 SERIES UNIVERSAL HOLDER (STRAIGHT ADAPTER HEAD)						
Part No. Holder Assy.*	Taper	Barrel Dia. A	Shank Dia B	Shank Length L	Head Assy. H	Barrel Thread Size T
18-621 18-622	4 RW	1	7/8	3	18-768	7/8-14
18-623 18-671		1-1/4	1-1/4	3-1/2	18-768 18-784	7/8-14 1-14
18-624 18-674	5 RW	1-1/4	1-1/2	4	18-768	7/8-14
18-672 18-673		1-1/2	1-1/2	4	18-784	1-14

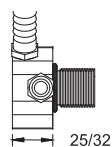
600 SERIES UNIVERSAL HOLDER (30° ADAPTER HEAD)							
Part No. Holder Assy.*	Taper	Barrel Dia. A	Shank Dia B	Shank Length L	Head Assy. H	Barrel Thread Size T	
18-602 18-604	4 RW	1	7/8	3	18-765	7/8-14	
18-606 18-608		1-1/4	1-1/4	3-1/2	18-765	7/8-14	
18-612 18-614	5 RW	1	7/8	3	18-767	7/8-14	
18-616 18-618		1-1/4	1-1/4	3-1/2	18-767	7/8-14	
18-652 18-658		1-1/4	1-1/4	3-1/2	18-781	1-14	
18-656 18-654		1-1/2	1-1/4	4	18-781	1-14	
18-662 18-666 18-664		7 RW	1-1/4	1-1/4	3-1/2	18-783	1-14
			1-1/2	1-1/4	4		

600 SERIES UNIVERSAL WATER COOLED ELECTRODE HOLDER (THREADED ADAPTER HEAD)

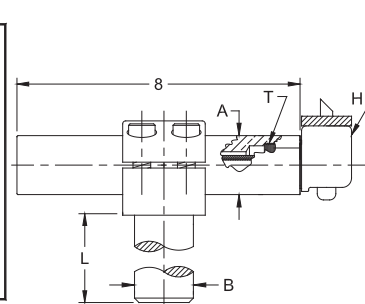
600 SERIES UNIVERSAL HOLDER (THREADED ADAPTER HEAD)							
Part No. Holder Assy.*	Taper	Head Angle	Barrel Dia. A	Shank Dia B	Shank Length L	Head Assy. H	Barrel Thread Size T
18-6515 18-6535	5 RW	90°	1-1/4	1-1/4	3-1/2	18-7805	1-14
18-6525 18-6545		30°	1-1/4	1-1/4	3-1/2	18-7815	1-14
18-6516 18-6536	6 RW	90°	1-1/4	1-1/4	3-1/2	18-7806	1-14
18-6526 18-6546		30°	1-1/4	1-1/4	3-1/2	18-7816	1-14



TYPE (A)
600 Series Water Connector Body 18-74001



TYPE (C)
100 Series Water Connector Body 18-10042



*Standard holders include type "A" water connector, types "B" and "C" available on request