

CRANK ELECTRODES - COLD FORMED



Phone: 888-654-9353

Fax: 937-253-2324

Email: sales@productionengineering.com

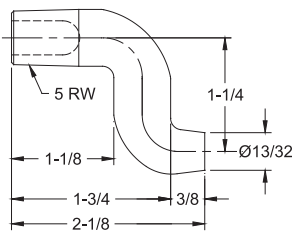
FEATURES AND SPECIFICATIONS

- Very strong bend electrodes for higher force applications
- Bent & Offset electrodes are for hard to reach locations
- Long lasting heavy duty electrodes

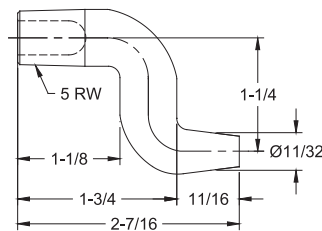
- Works with all industry standard holders
- Use with 4 & 5 R.W.M.A Holders
- Bent dimensions are for reference only

- Electrical conductivity up to 85% IACS for cold formed crank electrodes
- Rockwell hardness up to 83 HRB for cold formed crank electrodes

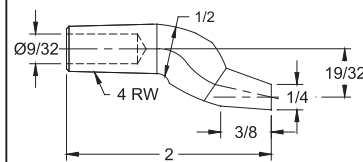
CRANK ELECTRODES - COLD FORMED



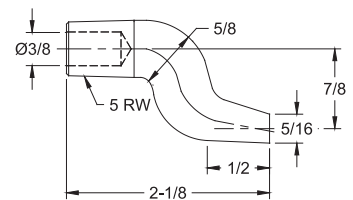
16-38661 RWMA CLASS 2
COLD FORMED*



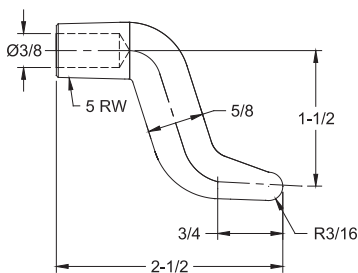
16-3866 RWMA CLASS 2
COLD FORMED*



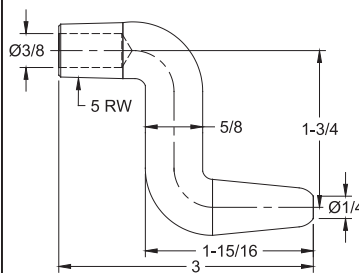
16-3870 RWMA CLASS 2
COLD FORMED*



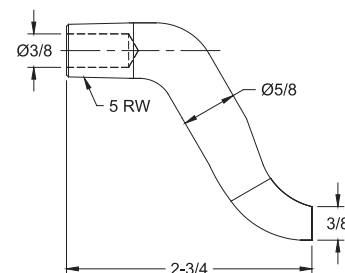
16-3871 RWMA CLASS 2
COLD FORMED*



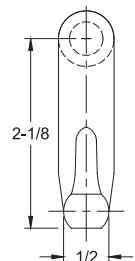
16-38351 RWMA CLASS 2
COLD FORMED*



16-38352 RWMA CLASS 2
COLD FORMED*



16-38353 RWMA CLASS 2
COLD FORMED*



*Optional materials RWMA CLASS 1 and CLASS 3 available on special order

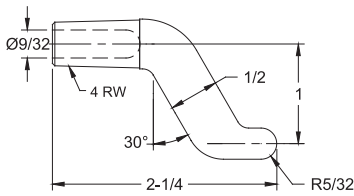
FEATURES AND SPECIFICATIONS

- Very strong bend electrodes for higher force applications
- Offset electrodes are for hard to reach locations
- Long lasting heavy duty electrodes

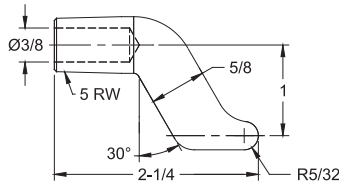
- Can be used in many job shop applications
- Works with all industry standard holders
- Use with 4 & 5 R.W.M.A Holders

- Electrical conductivity up to 80% IACS for castings & forged crank electrodes
- Rockwell hardness up to 70 HRB for castings & forged crank electrodes

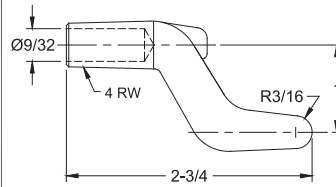
CRANK ELECTRODES - CASTING, FORGED



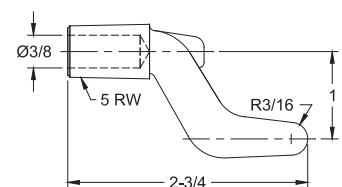
16-3835 RWMA CLASS 2
CASTING



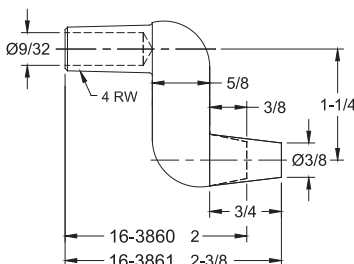
16-3836 RWMA CLASS 2
CASTING



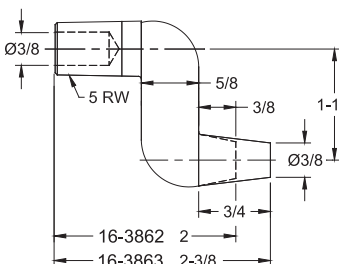
16-3837 RWMA CLASS 2
CASTING



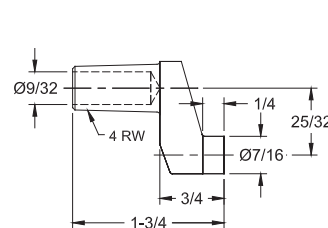
16-3838 RWMA CLASS 2
CASTING



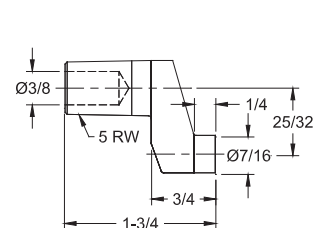
RWMA CLASS 2
FORGED



RWMA CLASS 2
FORGED



16-3873 RWMA CLASS 2
CASTING



16-3874 RWMA CLASS 2
CASTING