

CMW shanks are precision manufactured from Class 2 material to provide a high quality mount for cap type electrodes. They are designed for high strength and electrical conductivity.

\*These shanks are shown with a blind water hole for cap replacement without shutting off water. Shanks with through water holes are available, by adding "TH" to the basic part number. Example: MP30212TH.

## SHANKS FOR FEMALE CAP ELECTRODES

- See pages 8 & 9 for  
CMW standard nose  
and GCAP® electrode  
caps



SHANKS FOR FEMALE CAPS WITH #4 RW TAPERS

Part No.	A	B
MP3012	1.25	1.75
MP3013	1.50	2.00
MP3014	1.75	2.25
MP3015	2.00	2.50
MP3016	2.25	2.75
MP3017	2.50	3.00
MP3018	2.75	3.25
MP3019	3.00	3.50
MP30112	3.25	3.75
MP30114	3.50	4.00
MP30116	3.75	4.25
MP30118	4.00	4.50

BENT OFFSET SHANKS FOR FEMALE CAPS WITH #4 RW TAPERS

Part No.	A	B	C
MP3019-08	2.62	3.28	0.50
MP3019-12	2.56	3.22	0.75
MP30112-12	2.81	3.47	0.75
MP30112-16	2.37	3.03	1.00
MP30116-16	2.87	3.53	1.00
MP30116-20	2.60	3.28	1.25

Bent Dimensions for Reference Only



SHANKS FOR FEMALE CAPS WITH #5 RW TAPERS

Part No.	A	B
MP3023	1.46	2.00
MP3024	1.71	2.25
MP3025	1.96	2.50
MP3026	2.21	2.75
MP3027	2.46	3.00
MP3028	2.71	3.25
MP3029	2.96	3.50
MP30212	3.21	3.75
MP30214	3.46	4.00
MP30216	3.71	4.25
MP30218	3.96	4.50
MP30220	4.21	4.75
MP30222	4.46	5.00

BENT OFFSET SHANKS FOR FEMALE CAPS WITH #5 RW TAPERS

Part No.	A	B	C
MP3029-08	2.58	3.20	0.50
MP3029-12	2.60	3.12	0.75
MP30212-12	2.77	3.44	0.75
MP30212-16	2.33	3.00	1.00
MP30214-12	3.00	3.66	0.75
MP30214-16	2.81	3.48	1.00
MP30216-16	2.83	3.49	1.00
MP30216-20	2.77	3.43	1.25

Bent Dimensions for Reference Only



SHANKS FOR FEMALE CAPS WITH #6 RW TAPERS

Part No.	A	B
MP3044	1.64	2.25
MP3045	1.89	2.50
MP3046	2.14	2.75
MP3047	2.39	3.00
MP3048	2.64	3.25
MP3049	2.89	3.50
MP30412	3.14	3.75
MP30414	3.39	4.00
MP30416	3.64	4.25
MP30418	3.89	4.50
MP30420	4.14	4.75
MP30422	4.39	5.00

BENT OFFSET SHANKS FOR FEMALE CAPS WITH #6 RW TAPERS

Part No.	A	B	C
MP3049-08	2.69	3.30	0.50
MP30412-12	2.81	3.42	0.75
MP30414-12	2.94	3.55	0.75
MP30416-16	3.06	3.67	1.00
MP30420-20	3.25	3.86	1.25

Bent Dimensions for Reference Only

# SHANKS FOR MALE CAP ELECTRODES



Phone: 888-654-9353

Fax: 937-253-2324

Email: sales@productionengineering.com

CMW shanks are precision manufactured from Class 2 material to provide a high quality mount for cap type electrodes. They are designed for high strength and electrical conductivity.

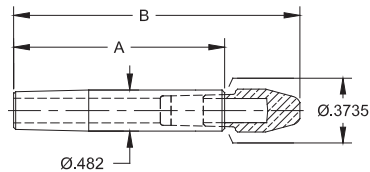
## SHANKS FOR MALE CAP ELECTRODES

- See pages 8 & 9 for CMW standard nose and GCAP® electrode caps



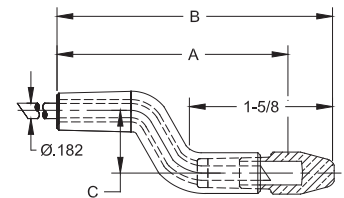
SHANKS FOR MALE CAPS WITH #4 RW TAPERS

Part No.	A	B
3012	1.25	1.88
3013	1.50	2.12
3014	1.75	2.38
3015	2.00	2.62
3016	2.25	2.88
3017	2.50	3.12
3018	2.75	3.38
3019	3.00	3.62
30112	3.25	3.88
30114	3.50	4.12
30116	3.75	4.38
30118	4.00	4.62



BENT OFFSET SHANKS FOR MALE CAPS WITH #4 RW TAPERS

Part No.	A	B	C
3019-08	2.62	3.37	0.50
3019-12	2.56	3.31	0.75
30112-12	2.81	3.56	0.75
30112-16	2.37	3.12	1.00
30116-16	2.87	3.62	1.00
30116-20	2.62	3.37	1.25

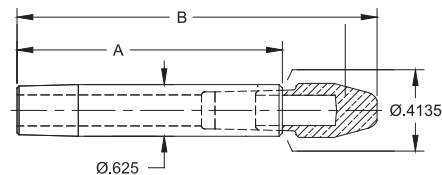


Bent Dimensions for Reference Only



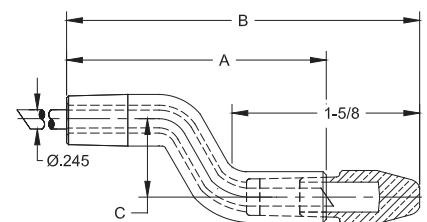
SHANKS FOR MALE CAPS WITH #5 RW TAPERS

Part No.	A	B
3022	1.25	2.00
3023	1.50	2.25
3024	1.75	2.50
3025	2.00	2.75
3026	2.25	3.00
3027	2.50	3.25
3028	2.75	3.50
3029	3.00	3.75
30212	3.25	4.00
30214	3.50	4.25
30216	3.75	4.50
30218	4.00	4.75
30220	4.25	5.00
30222	4.50	5.25



BENT OFFSET SHANKS FOR MALE CAPS WITH #5 RW TAPERS

Part No.	A	B	C
3028-08	2.37	3.12	0.50
3028-12	2.31	3.06	0.75
30212-12	2.81	3.56	0.75
30212-16	2.37	3.12	1.00
30214-12	3.06	3.81	0.75
30214-16	2.62	3.37	1.00
30214-20	2.37	3.12	1.25
30216-16	2.87	3.62	1.00
30216-20	2.62	3.37	1.25

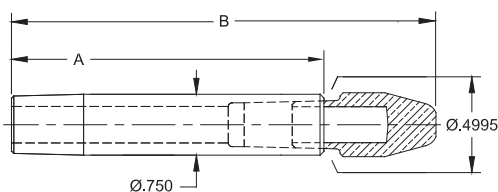


Bent Dimensions for Reference Only



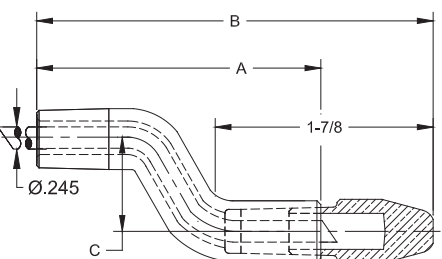
SHANKS FOR MALE CAPS WITH #6 RW TAPERS

Part No.	A	B
3043	1.50	2.62
3044	1.75	2.88
3045	2.00	3.12
3046	2.25	3.38
3047	2.50	3.62
3048	2.75	3.88
3049	3.00	4.12
30412	3.25	4.38
30414	3.50	4.62
30416	3.75	4.88
30418	4.00	5.12
30420	4.25	5.38
30422	4.50	5.62



BENT OFFSET SHANKS FOR MALE CAPS WITH #6 RW TAPERS

Part No.	A	B	C
30412-08	2.62	3.75	0.50
30412-12	2.56	3.69	0.75
30414-12	2.75	3.88	0.75
30416-16	2.87	4.00	1.00
30420-20	3.12	4.25	1.25



Bent Dimensions for Reference Only